

d:rh

d:rh architetti  
associati







## WHO WE ARE

The Studio D:RH architetti e associati has been founded in 1996 by Sergio Dinale and Paola Rignat Hugues. Since 2009 Enrico Robazza joined the studio as Associates.

The Studio D:RH architetti e associati is located in Venice and Como and is structured in two sectors. The planning sector is in charge of urban planning, landscaping, environmental, eco-tourism.

The design sector is responsible for the preparation of building projects, public spaces, interiors, with public and private clients.

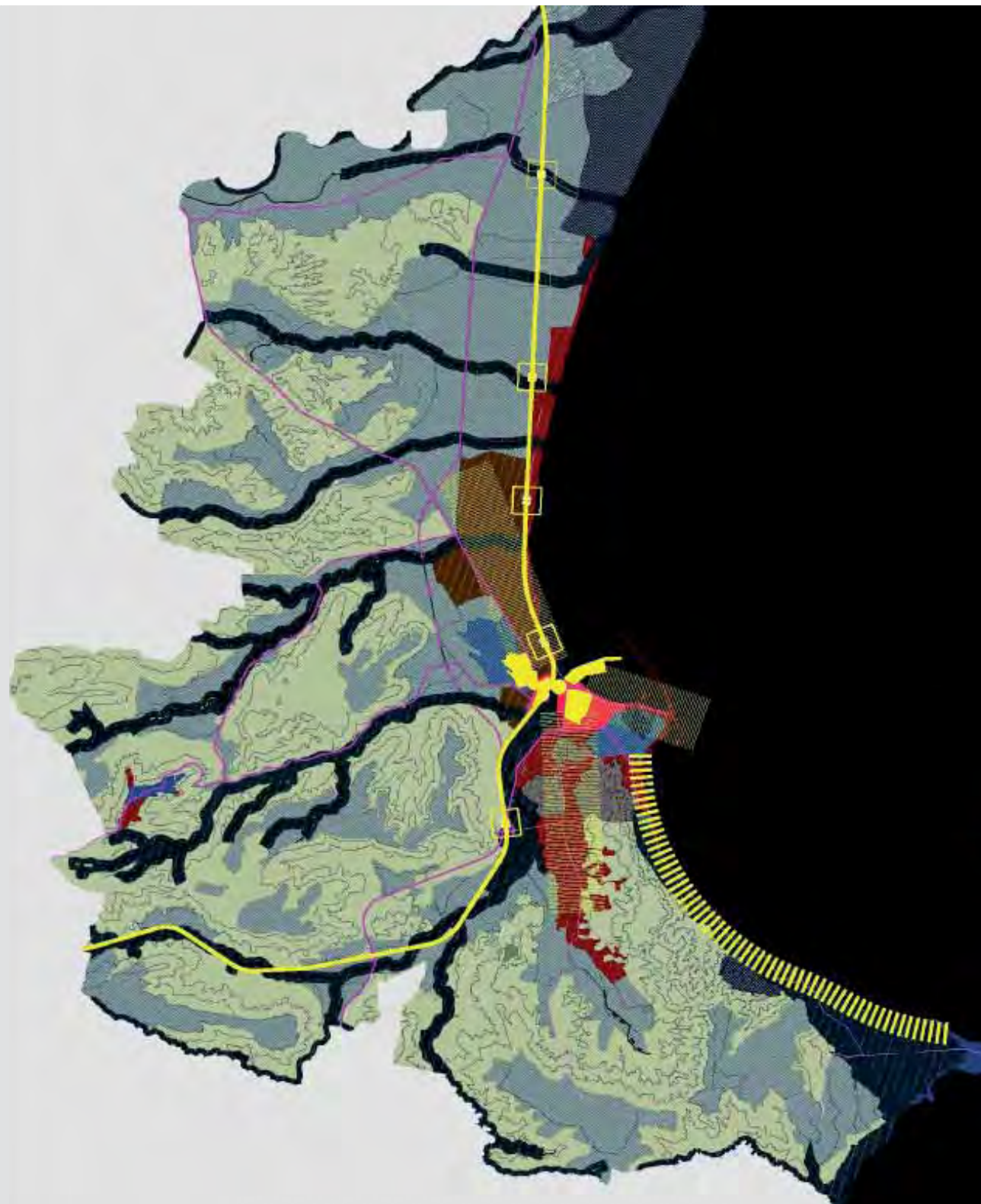
Both the sectors in which it is structured Studio D:RH architetti e associati address optimally the complexity which characterizes today both the planning design and the building design.

The multidisciplinary nature of the office, the continuous exchange between the fields of planning and design, the ability to work in group guarantee a professional offer able to address the many aspects and complexities that today mark the design activity.

In addition, a team of consultants, with whom the Studio D: RH associated architects maintains collaborative relationships and partnerships established and stable, provide the necessary response also to the more specialized fields: from legal ones, to those naturalistic; those plant and energy to those of the economic feasibility of the proposed interventions.

Many of the works of Studio D:RH architetti e associati have won many awards and have been featured in exhibitions.





## ELEMENTI PATRIMONIALI

### ambientali

- riserva naturale
- riserva di promontorio
- versanti
- entità costiere di pregio
- entità fluviali
- aree agricole



### insediativi

- centro storico
- aree archeologiche



### infrastrutturali

- ferrovie e stazioni ferroviarie



## ELEMENTI TRASFORMABILI

### ambientali

- colture agricole urbane



### insediativi

- zone rurali
- residenze
- produzioni



### infrastrutturali

- rete viaria



## LOGICA DELLA TRASFORMAZIONE

### Il nodo: motore tripolare



### riqualificazione centro storico



### riqualificazione asse turistico sud



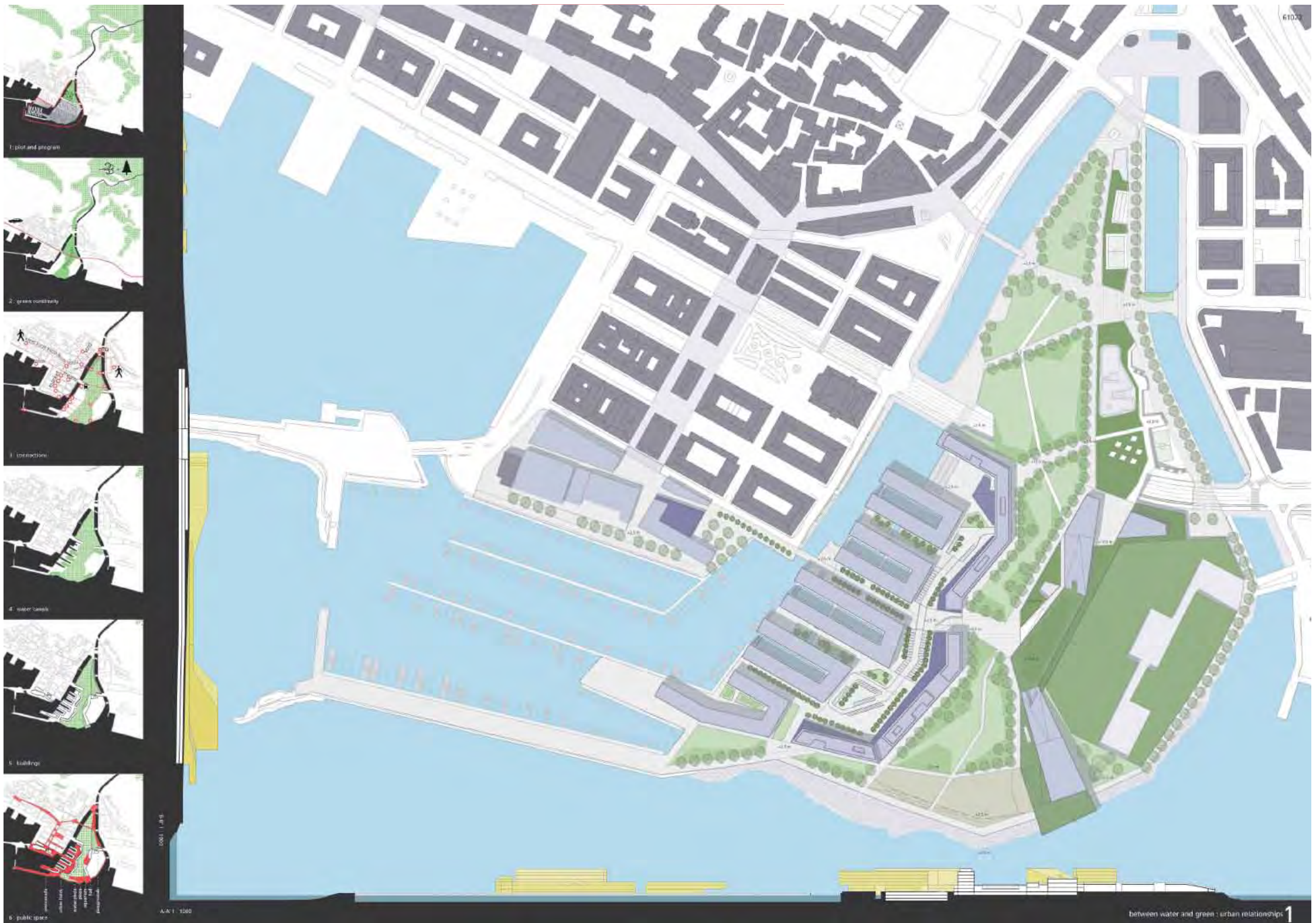


## VISION & MISSION

The aim of Studio D:RH architetti associati is to guide and to assist its own customers, especially public authorities, along the course of planning which goes from conception to realization.

Along this way the work of Studio D:RH architetti associati is aimed at guaranteeing conditions of concreteness, feasibility and fruition of its interventions.







## WHAT WE CAN DO

The Studio D:RH architetti associati supplies the following aspects of planning:

- Strategic plans;
- Masterplan and general town planning scheme;
- Landscape design;
- Feasibility studies;
- Masterplan and detailed urban design;
- Public works planning.









## SELECTED PROJECTS



# STRATEGIC PLAN GENERAL MASTERPLAN



LOCATION

Medellin (COLOMBIA)

TYPE

Competition

DESCRIPTION

Masterplan of "PARQUE DEL RIO" in the city of Medellin

PERIOD

2013

COMMISSIONED BY

City of Medellin

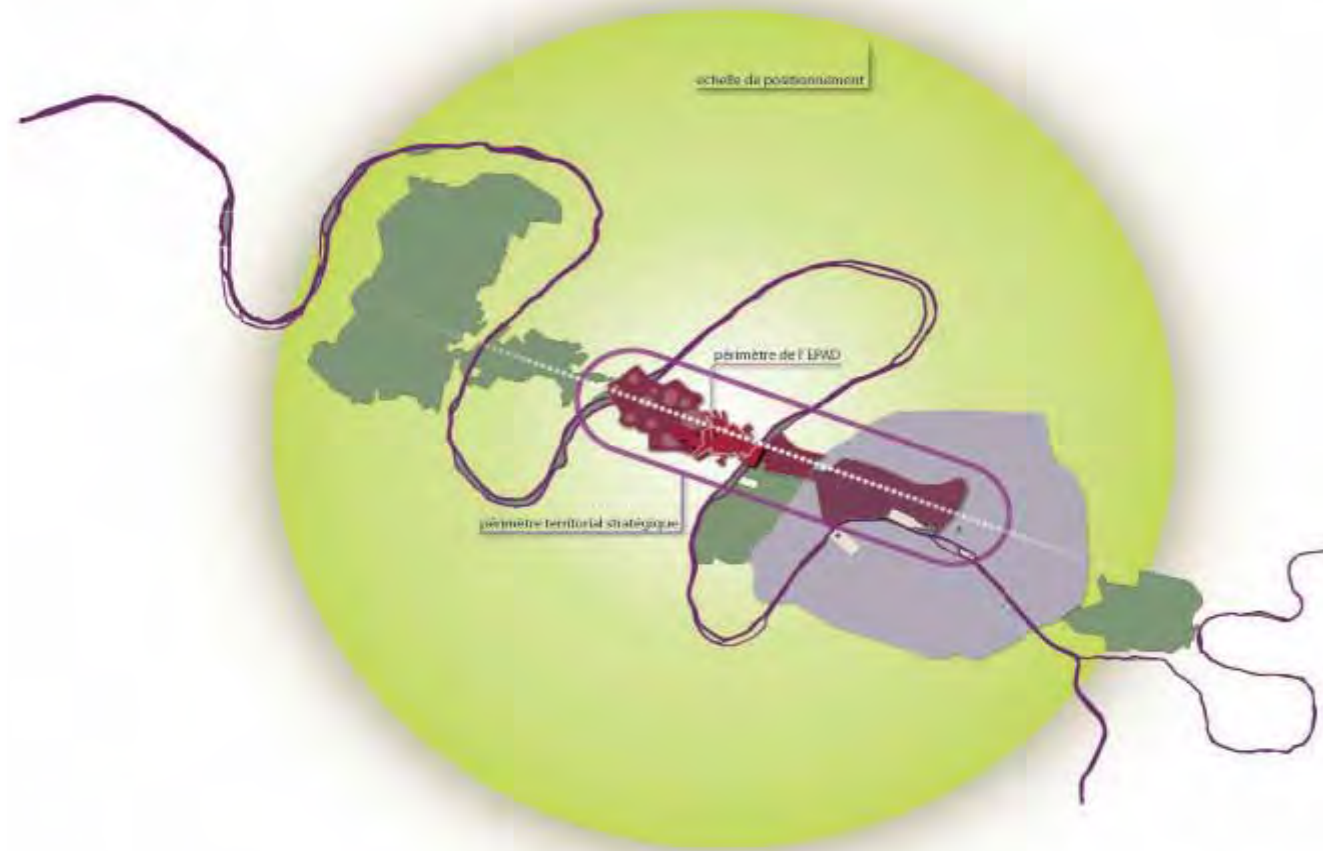
TEAM LEADER

Studio D:RH





## STRATEGIC PLAN GENERAL MASTERPLAN

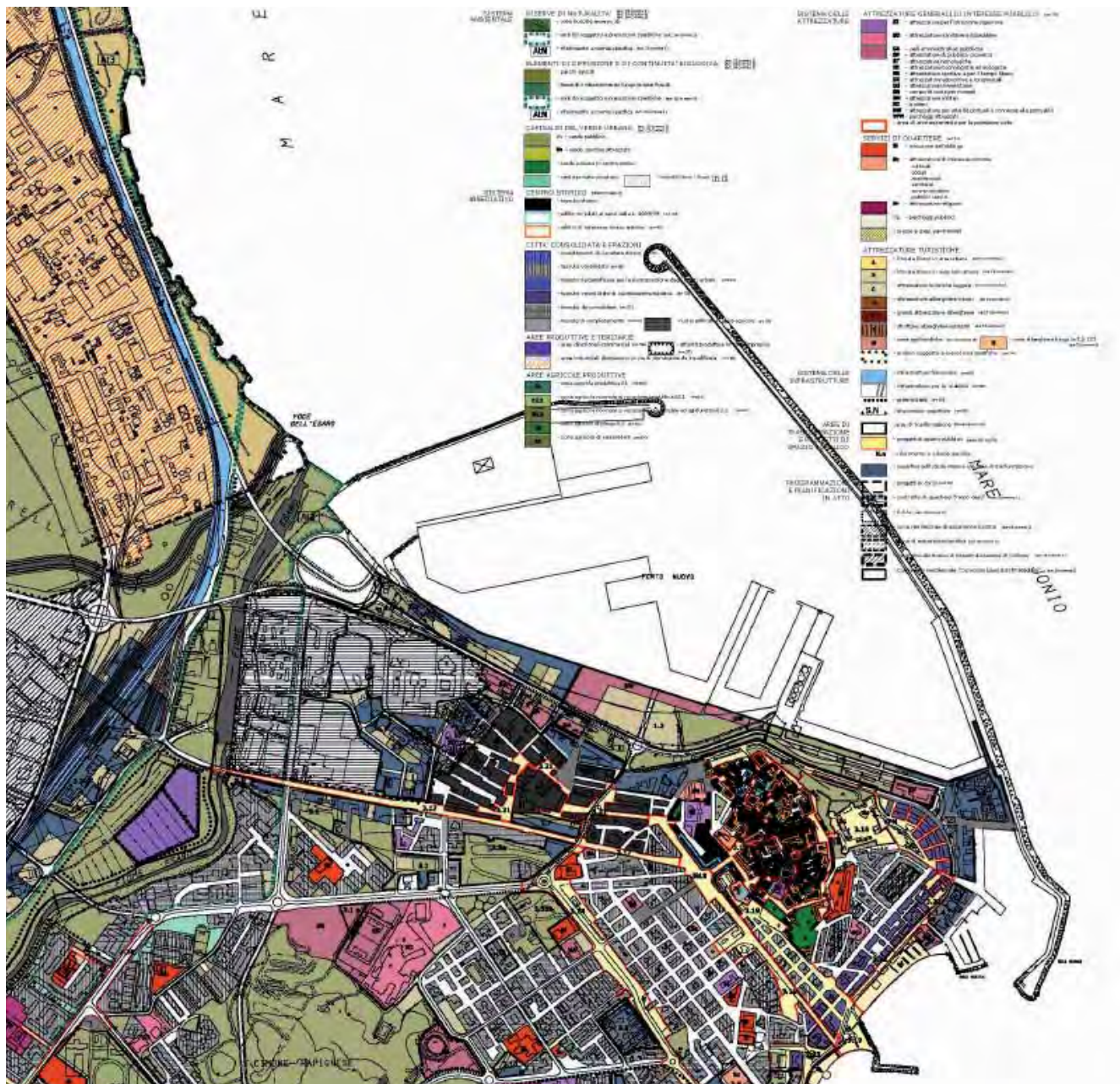


LOCATION	Défense - Paris (FRANCE)
TYPE	General masterplan
DESCRIPTION	Strategic plan and masterplan for Défense district, Paris
PERIOD	2007
COMMISSIONED BY	Etablissement Public d'Aménagement de La Défense
TEAM LEADER	Studio D:RH
STATUS	Ended





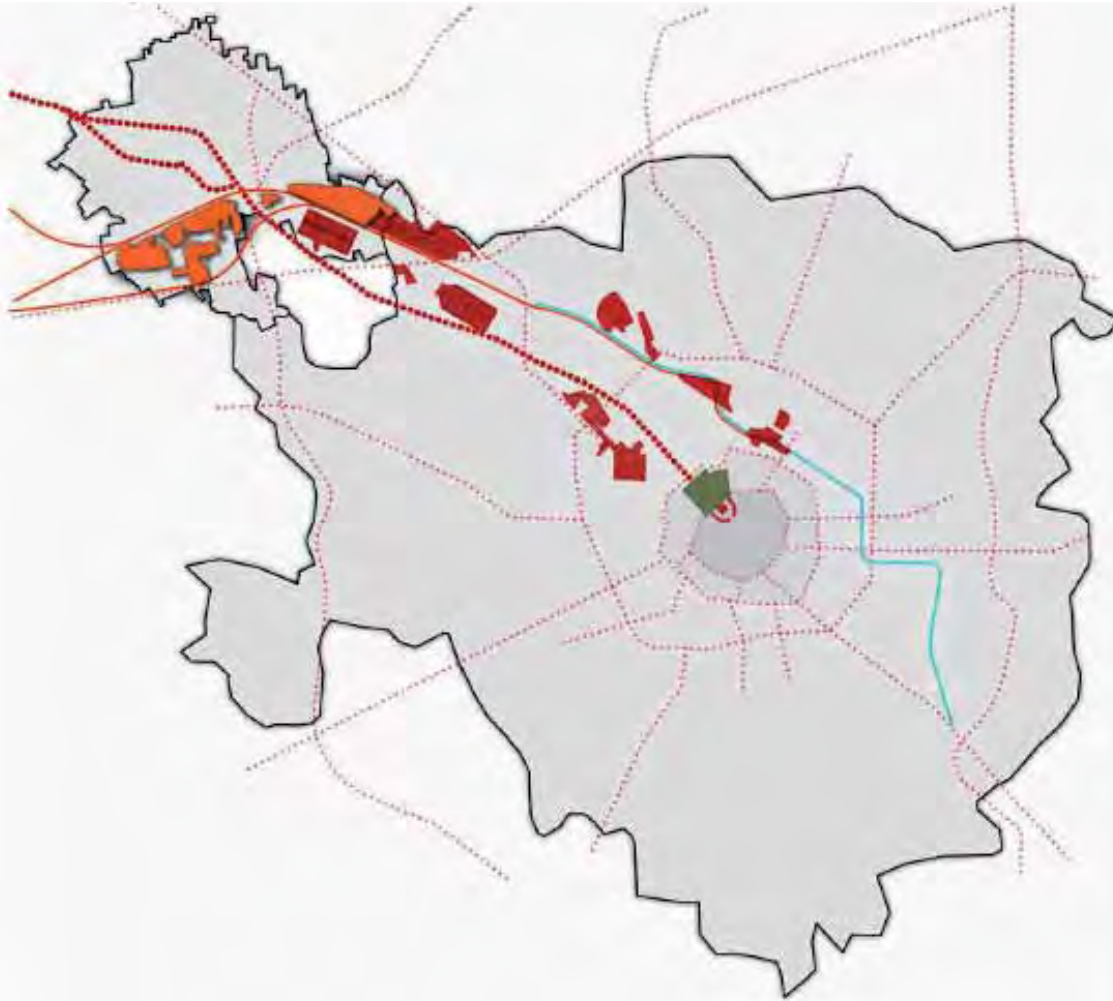
# URBAN DEVELOPMENT PLAN



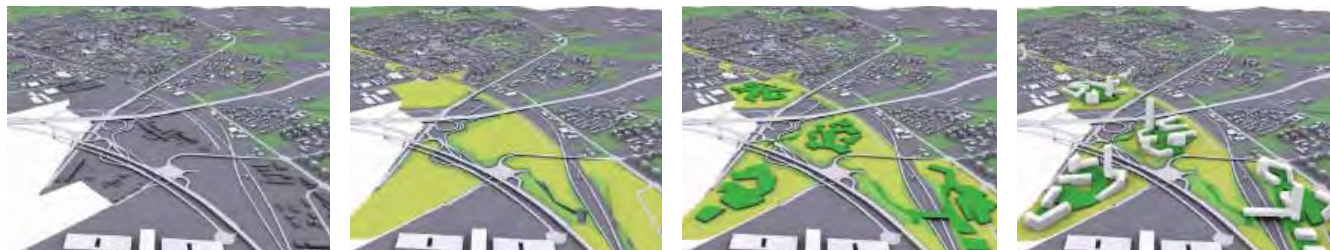
LOCATION	Crotona (ITALY)
TYPE	Urban Development Plan
DESCRIPTION	New General town planning scheme
DIMENSION	60.000 inhabitant
PERIOD	2000-2004
COMMISSIONED BY	City of Crotona
TEAM LEADER	Studio D:RH
STATUS	ended



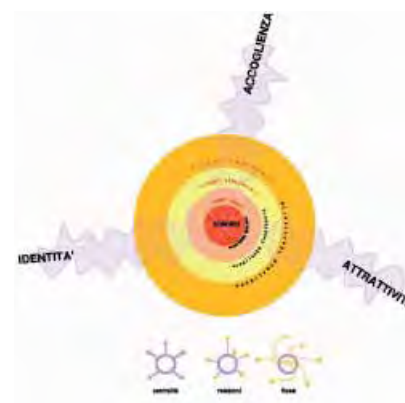
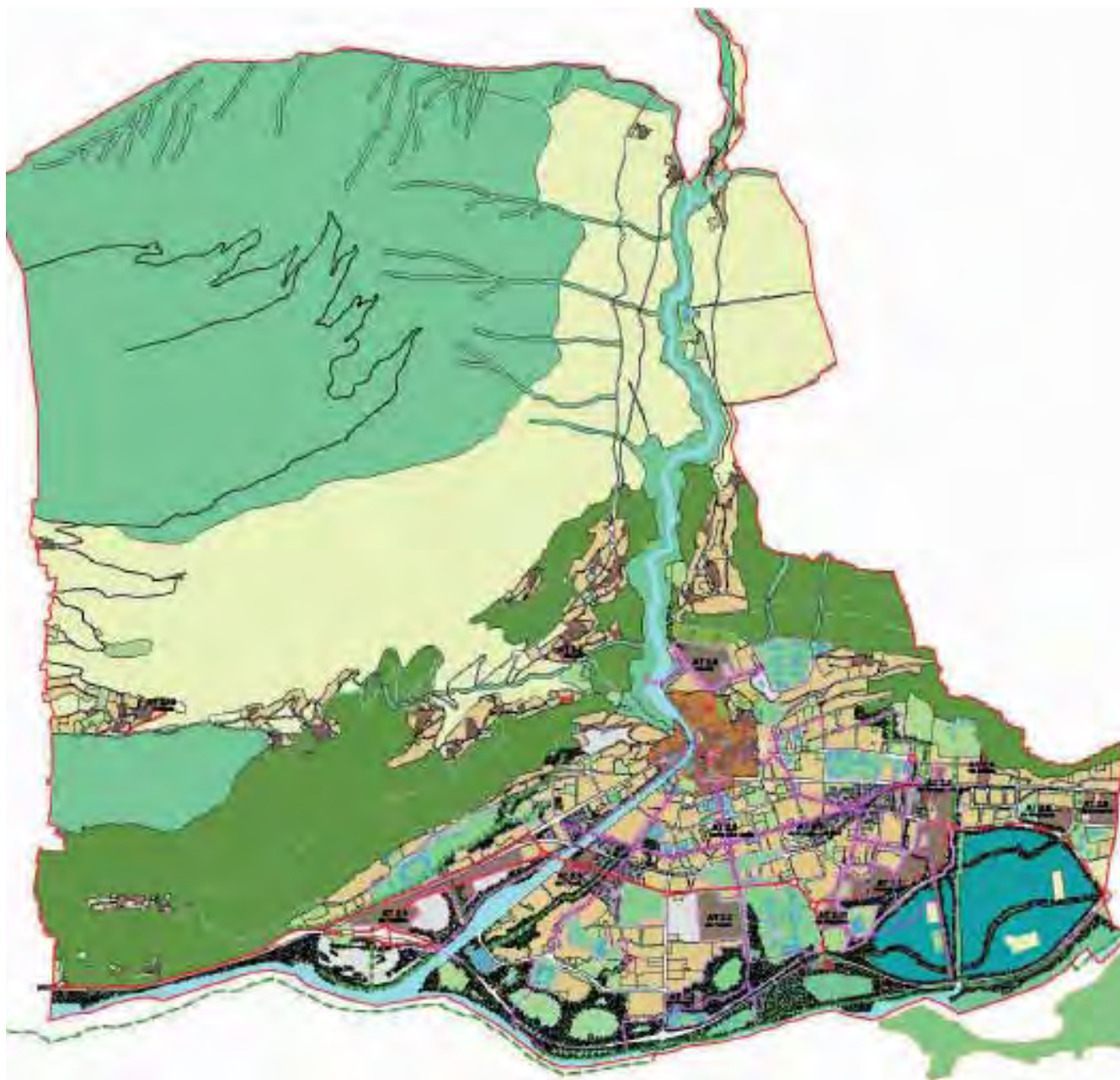
# URBAN DEVELOPMENT PLAN



LOCATION	Rho (ITALY)
TYPE	Urban Development Plan
DESCRIPTION	New General town planning scheme
DIMENSION	50.000 inhabitant
PERIOD	2008-2013
COMMISSIONED BY	City of Rho
TEAM LEADER	Studio D:RH
STATUS	ended



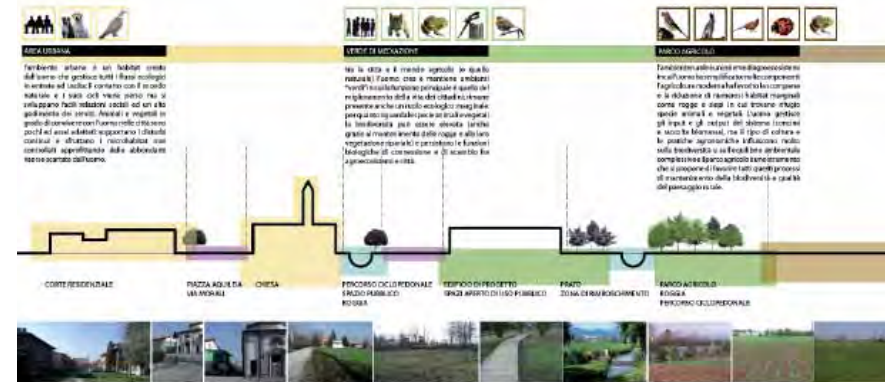
## URBAN DEVELOPMENT PLAN



LOCATION	Sondrio (ITALY)
TYPE	Urban development
DESCRIPTION	New General town planning scheme
DIMENSION	22.000 inhabitant
PERIOD	2009-2011
COMMISSIONED BY	City of Sondrio
TEAM LEADER	Studio D:RH
STATUS	ended



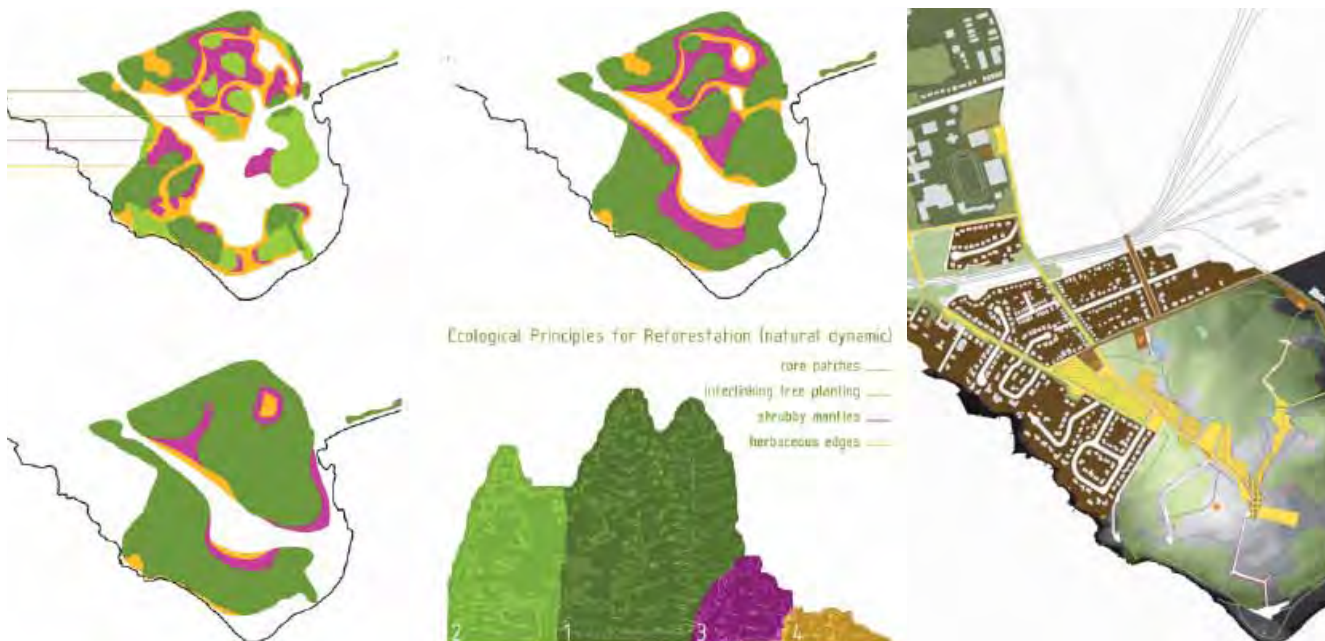
## LANDSCAPE DESIGN



LOCATION	Rosà (ITALY)
TYPE	Landascape design
DESCRIPTION	Regional park
PERIOD	2004
COMMISSIONED BY	City of Rosà
STATUS	Ended



## LANDSCAPE DESIGN

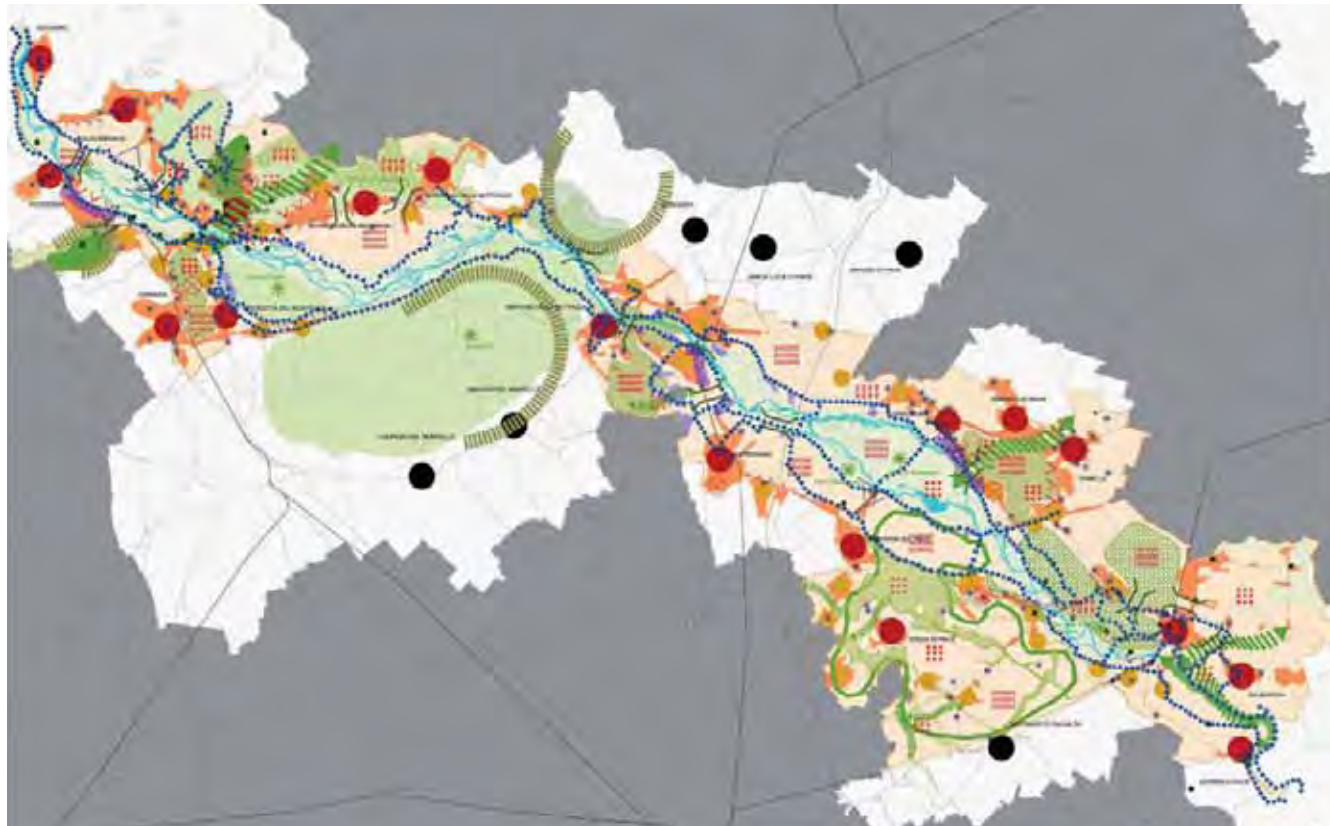


LOCATION	Halifax (CANADA)
TYPE	Competition
DESCRIPTION	Halifax urban park
PERIOD	2005
COMMISSIONED BY	City of Halifax
TEAM LEADER	Studio D:RH





## LANDSCAPE DESIGN



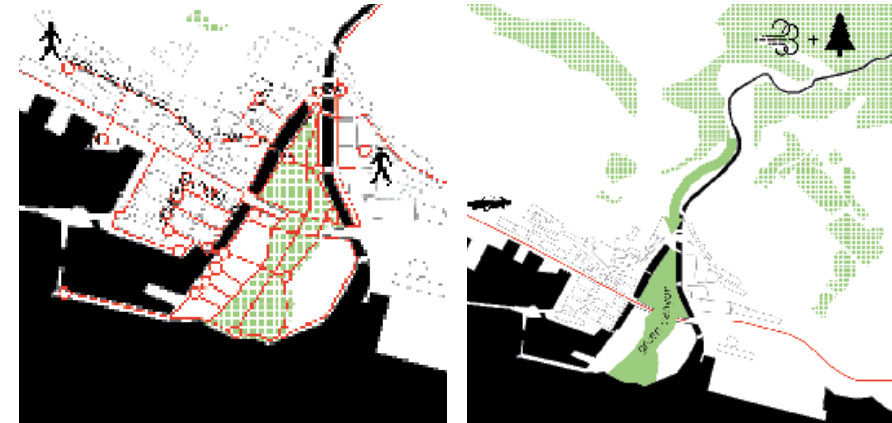
LOCATION	County of Treviso (ITALY)
TYPE	Landscape design
DESCRIPTION	Territorial landscape plan of the riverside of Piave river
PERIOD	2009
COMMISSIONED BY	Province of Treviso
TEAM LEADER	Studio D:RH
STATUS	Ended







## URBAN DESIGN



LOCATION	Rijeka (CROATIA)
TYPE	Competition
DESCRIPTION	Urban and architectural concept design for the development of Delta and porto Baros area in Rijeka
PERIOD	2013
COMMISSIONED BY	Port of Rijeka authority and city of Rijeka
TEAM LEADER	Studio D:RH





## URBAN DESIGN



LOCATION	Venezia - Mestre (ITALY)
TYPE	Competition
DESCRIPTION	New residential district in Venezia
PERIOD	2008
COMMISSIONED BY	City of Venice
TEAM LEADER	Studio D:RH



## URBAN DESIGN



LOCATION	Erba (ITALY)
TYPE	Competition
DESCRIPTION	Urban regeneration and environmental improvements of city down town
PERIOD	2013
COMMISSIONED BY	City of Erba
TEAM LEADER	Studio D:RH







## URBAN DESIGN



LOCATION

Monfalcone (ITALY)

TYPE

Competition

DESCRIPTION

Creation of an equipped area to serve the industrial area Schiavetti Brancolo

PERIOD

2009

COMMISSIONED BY

Industrial Development Consortium of the city of Monfalcone

TEAM LEADER

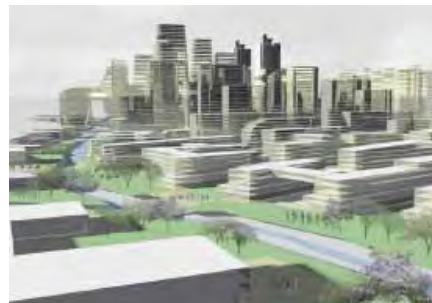
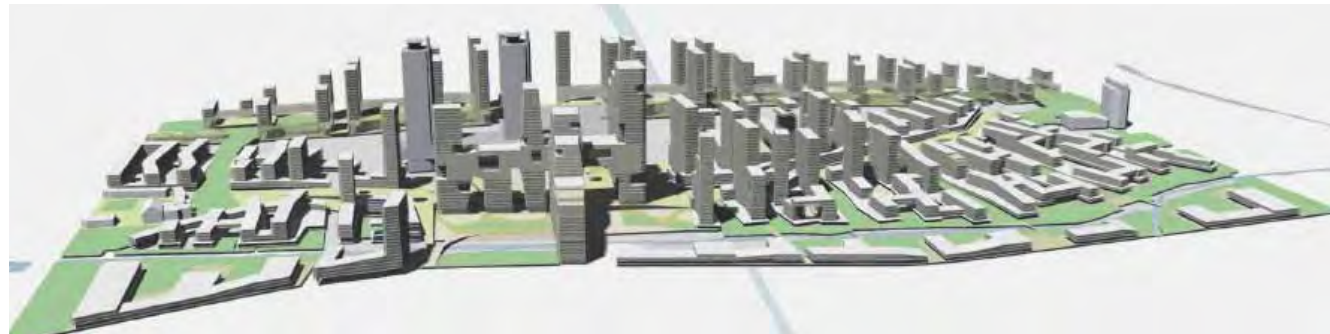
Studio D:RH







## URBAN DESIGN



LOCATION	Daejeon (NORTH KOREA)
TYPE	Competition
DESCRIPTION	Urban regeneration and environmental improvements of city down town
PERIOD	2008
COMMISSIONED BY	City of Daejeon
TEAM LEADER	Studio D:RH





## URBAN SPACE AND PUBLIC UTILITIES



LOCATION	Treviso (ITALY)
DESCRIPTION	Urban park and indoor swimming pool
PERIOD	2008-2013
TYPE	Construction
COST	4,5 mil Euro
COMMISSIONED BY	City of Treviso
TEAM LEADER	Studio D:RH
STATUS	Built





## URBAN SPACE AND PUBLIC UTILITIES



LOCATION	Crotona (ITALY)
DESCRIPTION	Waterfront
PERIOD	2008-2013
TYPE	Construction
COST	17,5 mil Euro
COMMISSIONED BY	City of Crotona
TEAM LEADER	Studio D:RH
STATUS	Under construction





## URBAN SPACE AND PUBLIC UTILITIES



LOCATION	Como (ITALY)
TYPE	Competition
DESCRIPTION	School building
PERIOD	2010
COMMISSIONED BY	National association of builders of Como
TEAM LEADER	Studio D:RH





## URBAN SPACE AND PUBLIC UTILITIES

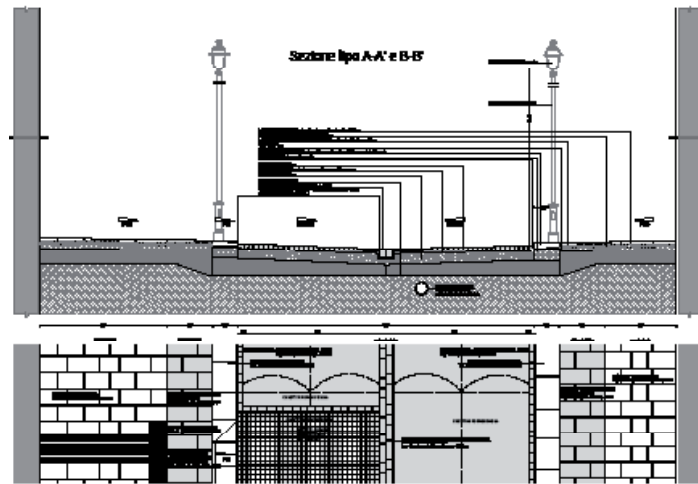
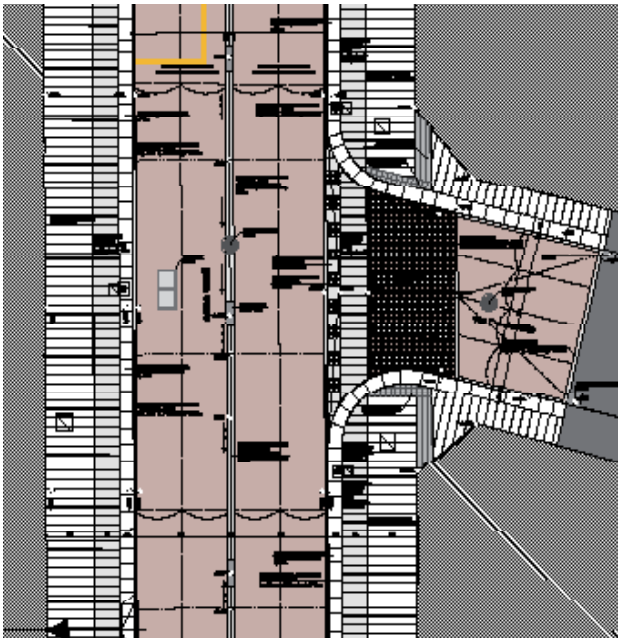


LOCATION	Lamezia Terme (ITALY)
TYPE	Competition
DESCRIPTION	Urban park and sport facilities
PERIOD	2010
COMMISSIONED BY	City of Lamezia Terme
TEAM LEADER	Studio D:RH





## URBAN SPACE AND PUBLIC UTILITIES

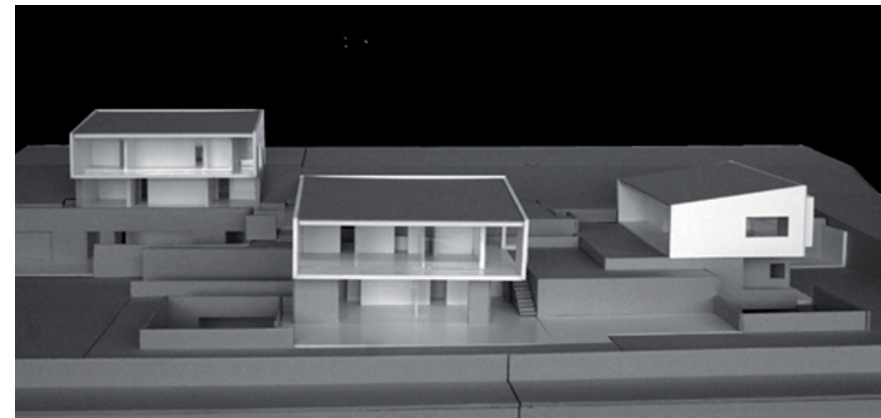


LOCATION	Gorizia (ITALY)
DESCRIPTION	Redevelopment
PERIOD	2009-2013
TYPE	Construction
COST	1.8 mil Euro
COMMISSIONED BY	City of Gorizia
TEAM LEADER	Studio D:RH
STATUS	Built





## HOUSING



LOCATION	Olgiate Comasco CO (ITALY)
DESCRIPTION	Residential
PERIOD	2007-2013
TYPE	Construction
COST	1.8 mil Euro
COMMISSIONED BY	Evalda srl
TEAM LEADER	Studio D:RH
STATUS	Built

